

Contributing to responsible production and sourcing of agro-commodities



Join NEPCon in our quest to bring responsible production and sourcing of timber and agro-commodities to the next level.

WHY is responsible production and sourcing of agro-commodities needed?

The production of many agro-commodities has unfortunately led to the large-scale conversion of many natural ecosystems. This has devastating impacts on the environment and people in the countries where they are grown, including disproportionately often in developing countries.

Environmental impacts include:

- Soil erosion, degradation, salinization and desertification
- Land conversion, deforestation and habitat destruction
- Climate change

Socio-economic impacts include:

- Resource limitations and losses
- Land degradation, leading to loss of land quality and productivity
- Restrictions on land for environmental and cultural amenities for local residents

Social impacts include:

- Exclusion of smallholders and women in opportunities to participate in profitable value chains.
- Loss of protection against climate change effects, such as from increased flooding.
- Indigenous communities with little control over ownership of their land are vulnerable to exploitation and human rights violations.

NEPCon's solution

In order to support the global efforts to meet these rising challenges, NEPCon is working to make critical information and support tools publicly available to enable effective decision-making in commodity supply chains, from the production, through processing, transport and trade. NEPCon has been working for the last four years to collect, analyse and publish **risk assessments** and information relevant to responsible production and sourcing of agro-commodities, being published on the **NEPCon Sourcing Hub**, in order to:

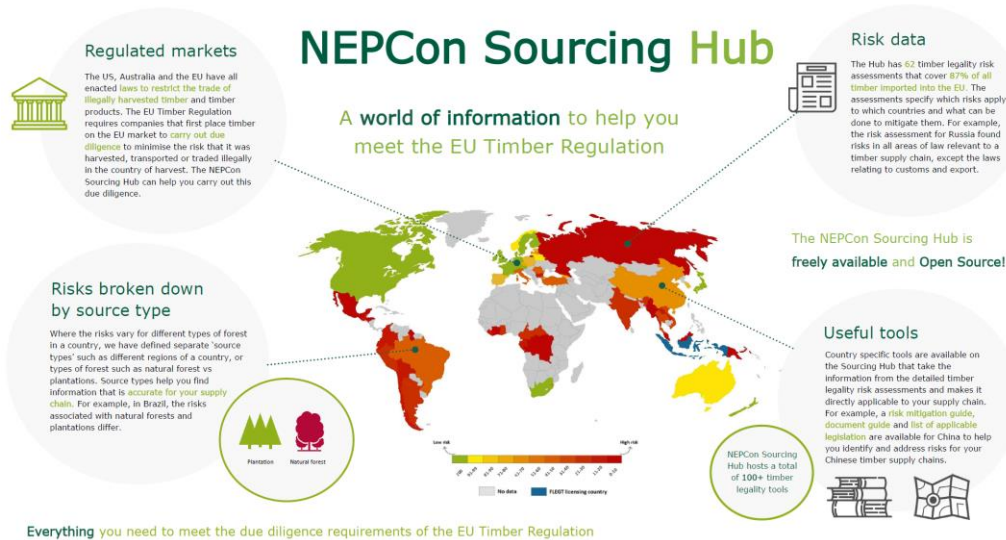
1. Provide open access to **detailed risk** assessment information, creating a common baseline for understanding risks in production systems and supply chains
2. Streamline the **use** of risk-based approaches to managing supply chains
3. Allow producers to **access** and understand legal requirements
4. **Share** and integrate risk information into other tracking databases and supply chain systems.

WHAT is the NEPCon Sourcing Hub?

The NEPCon Sourcing Hub (www.nepcon.org/sourcinghub) is an online information platform that provides detailed risk analysis across different commodities, at a national or sub-national level for a large range of countries.

Our vision: A world where human choices ensure a sustainable future

NEPCon | Skindergade 23, 3. sal | 1159 Copenhagen | Denmark | www.nepcon.org | info@nepcon.org
Phone: +45 8618 0866 | Fax: +45 8618 1012 | CVR: 18044633 | FSC™ A000535 | PEFC/09-44-02



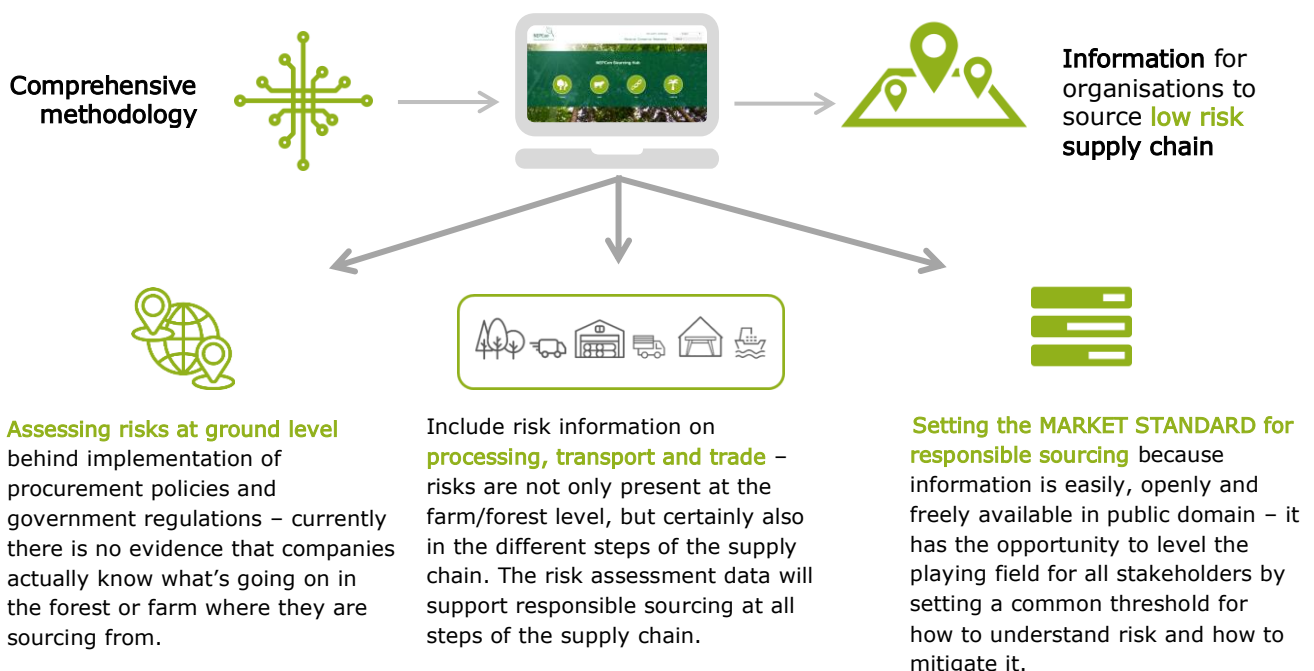
HOW is the NEPCon Sourcing Hub used?

The **Sourcing Hub** is structured around a simple user interface, providing an easy-to-understand overview of the steps required in supply chain risk assessment and management, and can be used by:

- **Companies** - can get specific risk information and mitigation measures for sourcing countries.
- **Government Agencies** - as means to help evaluate compliance with relevant regulations.
- **Consumers** - to make better decisions about the products they buy.
- **NGOs** - to find up to date and detailed information about sourcing risks.
- **Service providers** - can use data to verify risk information provided by companies.

HOW will the NEPCon Sourcing Hub facilitate transparent, accountable and responsible supply chains?

NEPCon's Sourcing Hub will be a **driver of global change** by:



WHY NEPCon?

- NEPCon is a non-profit organisation that builds commitment and capacity for mainstreaming sustainability.
- We are an environmental organisation that engages in **projects that develop new green solutions**, conserve biodiversity or help buyers to make sustainable choices.
- We make our risk assessments, tools and other information developed as part of our projects freely available as part of our **Open Source policy**.
- NEPCon continuously seeks to develop and improve methods that can **facilitate supply chain transparency** and verification of origin, legality, sustainability or other attributes.
- We have completed more than 70 risk assessment covering timber, soy, cattle, and palm oil.
- NEPCon was the first organisation to gain EU wide recognition as a Monitoring Organisation (MO) under the EUTR by the European Commission. Other MOs look to NEPCon as a leader in the area of due diligence verification.
- We have established a **broad global network of stakeholders** in this area, including at government, industry, and NGO/civil society levels, to ensure that our outputs are useful to those that need them to implement or enforce responsible sourcing policies.

NEXT STEPS for the NEPCon Sourcing Hub

The first version of the NEPCon Sourcing Hub will be released in Autumn 2017. A preview is currently available at: www.nepcon.org/sourcinghub. It is the goal of NEPCon to maintain and continue the development of the Sourcing Hub by:

- Update existing risk assessments including expansion of levels of detail and testing new risk assessment methodology
- Produce new risk assessments, expanding the scope both in terms of countries covered and the commodities considered
- On-going database management ensuring Open Access data sharing and logical data structuring.
- Continuous development of the risk assessment (RA) framework and methodology
- Improve user and stakeholder feedback functionalities (Wiki functionality, pro-active stakeholder feedback process).
- Increase and improve the user-friendliness of the Hub, through interactive output functions, customised risk reporting function as well as specific tools and guidance documents for additional countries.
- Dissemination to international stakeholders to encourage its uptake

SUPPORT the NEPCon Sourcing Hub

NEPCon is currently seeking support for the Sourcing Hub in order to ensure its usefulness as a tool to support stakeholders in enhancing & facilitating responsible production and supply of commodities. Additional funds are needed to further develop the Sourcing Hub to ensure the information gets into the hands of those that need it to implement accountable, transparent, and responsible sourcing and production of agro-commodities.

CONTACT US

To support the Sourcing Hub, please contact:



Katie Miller
Project Development Manager
NEPCon
km@nepcon.org
+ 45 3155 2536 | skype katie.j.miller1
www.nepcon.org